

Produto | Product

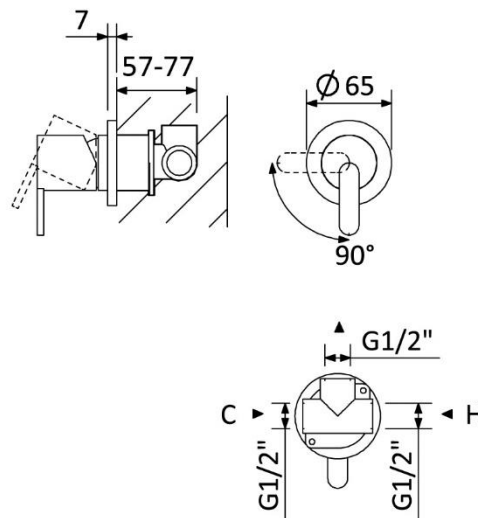
Monocomando embutido com 1 saída | *Concealed single lever mixer with 1 outlet*

167 120 1XX

IMAGEM* | *IMAGE**



DESENHO DIMENSIONAL | *DIMENSIONAL DRAWING*



ESPECIFICAÇÕES | *SPECIFICATIONS*

- Monocomando embutido com 1 saída;
- Cartucho de discos cerâmicos com cold start BRUMA SmoothBreeze®;
- Com elemento encastrável 200 140 1NO.

- *Concealed single lever mixer with 1 outlet;*
- *BRUMA SmoothBreeze® Ceramic cartridge with cold start;*
- *With concealed body 200 140 1NO.*

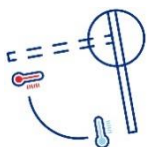


DIAGRAMA CAUDAL | *FLOW DIAGRAM*

- Caudal a 3 bar: 13,2 l/min

- *Flow rate at 3 bar: 13,2 l/min*

INSTRUÇÕES DE MANUTENÇÃO | *MAINTENANCE INSTRUCTIONS*



* Imagem não contratual | **Non-contractual image*

Product

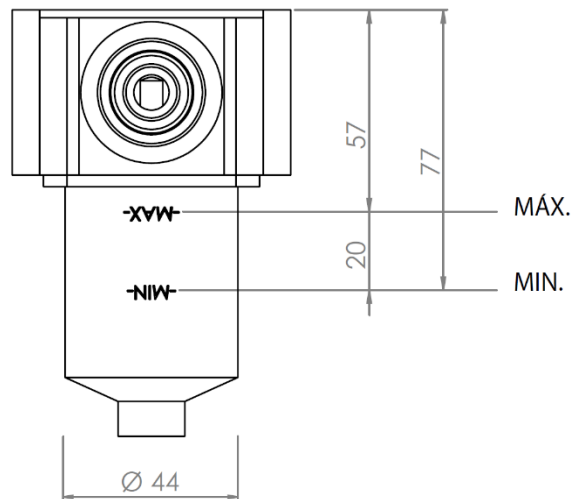
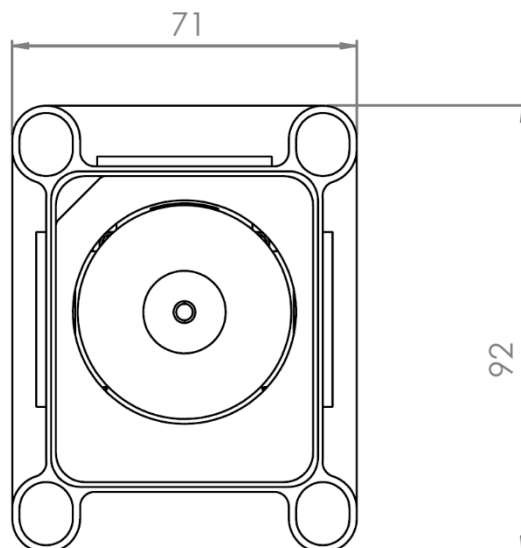
Elemento encastrável | *Concealed body*

200 140 1NO

IMAGEM* | *IMAGE**



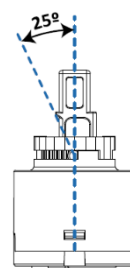
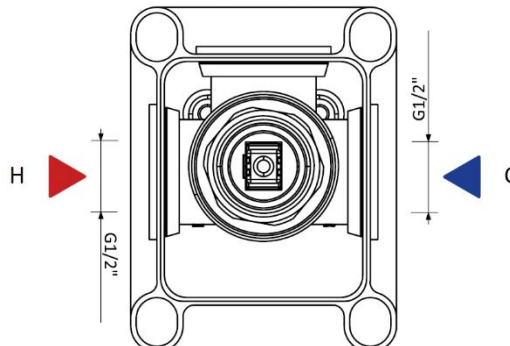
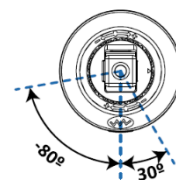
DESENHO DIMENSIONAL | *DIMENSIONAL DRAWING*



1



G1/2"



ESPECIFICAÇÕES | *SPECIFICATIONS*

- Elemento encastrável;
- Castelos de discos cerâmicos 1/2", 90°;
- Inclui parafusos e buchas para fixação.

- *Concealed body;*
- *Ceramic headparts 1/2" - 90°;*
- *Screws and plugs included.*

DIAGRAMA CAUDAL | *FLOW DIAGRAM*

- Caudal a 3 bar (sem restrição): 13,2 l/min

- *Flow rate at 3 bar (without restrictor): 13,2 l/min*

* Imagem não contratual | **Non-contractual image*

153/0

002 _12/03/2025

bruma.pt